



H. Toms Furniture and Undertaking - Richland County History Room photo.

H. Toms Furniture and Undertaking - 172 South Church Street - 1865 - 1880.

Hoosier Kitchen Cabinets—

The Hoosier is really an automatic servant. It has 40 features that aid you in cooking and saves you time and labor. Its perfect construction surpasses all other cabinets made.

THE H. TOMS CO.
HOME FURNISHERS FUNERAL DIRECTORS

Capt. Henry Toms was a native of England and one of the pioneer businessmen of Richland Center, born on August 6, 1829. He resided in his native country till 1853, when at the age of twenty-four he emigrated to the United States and first stopped at Lyons, New York, where he worked at the cabinet trade. He subsequently moved to St. John's, Mich., when, in 1859, he came to Wisconsin and located at Richland Center. He was engaged in the manufacture of fanning mills until 1861, when he enlisted in company D, of the 11th Wisconsin Volunteer Infantry. He was at first commissioned corporal, but was soon promoted to the rank of captain, and served as such until the regiment was mustered out of service. He was in active service during practically the entire period of the Civil War, being mustered out at Mobile, Alabama on September 4, 1865.

Returning to Richland Center, Capt. Toms established a furniture business. He was the longest tenured cabinet maker and furniture dealer in the village at that time. He began his furniture business and erected

the first portion of his store, the cabinet shop, in 1865. He then constructed furniture, wagons, and caskets. By 1880, his shop expanded to the north to include space for the sale of furniture.



Captain Henry Toms and Anna (Parfrey) Toms – Richland County History Room photos.

In 1864 Captain Toms and Miss Anna Parfrey, who was born in England, a daughter of Edward and Elizabeth (Crane) Parfrey, were married. The Parfrey family came to America in 1857 and spent their lives in Richland County. Captain and Mrs. Toms were the parents of seven children: Clara, Ada, Henry, Edwin, Josephine, Emma and Arthur.



After Toms' death in 1914, Arthur Toms continued the company advertising as furniture and undertaking business. In 1919-1920, H. Toms & Co. added space to the south of their undertaking business which included a funeral chapel. Continuing the furniture and undertaking business, Luenschloss and Weeden purchased the building in 1923. In 1927, it became Frank Luenschloss & Son and then Luenschloss and Doudna, Inc., in 1928. The business became Luenschloss and Hansen in 1938.

Above: Toms' Furniture Store about 1915. Ray Clark on the left, Newt Withers in center, and Arthur Toms, Henry Senior's son on the right - Richland County History Room photo.

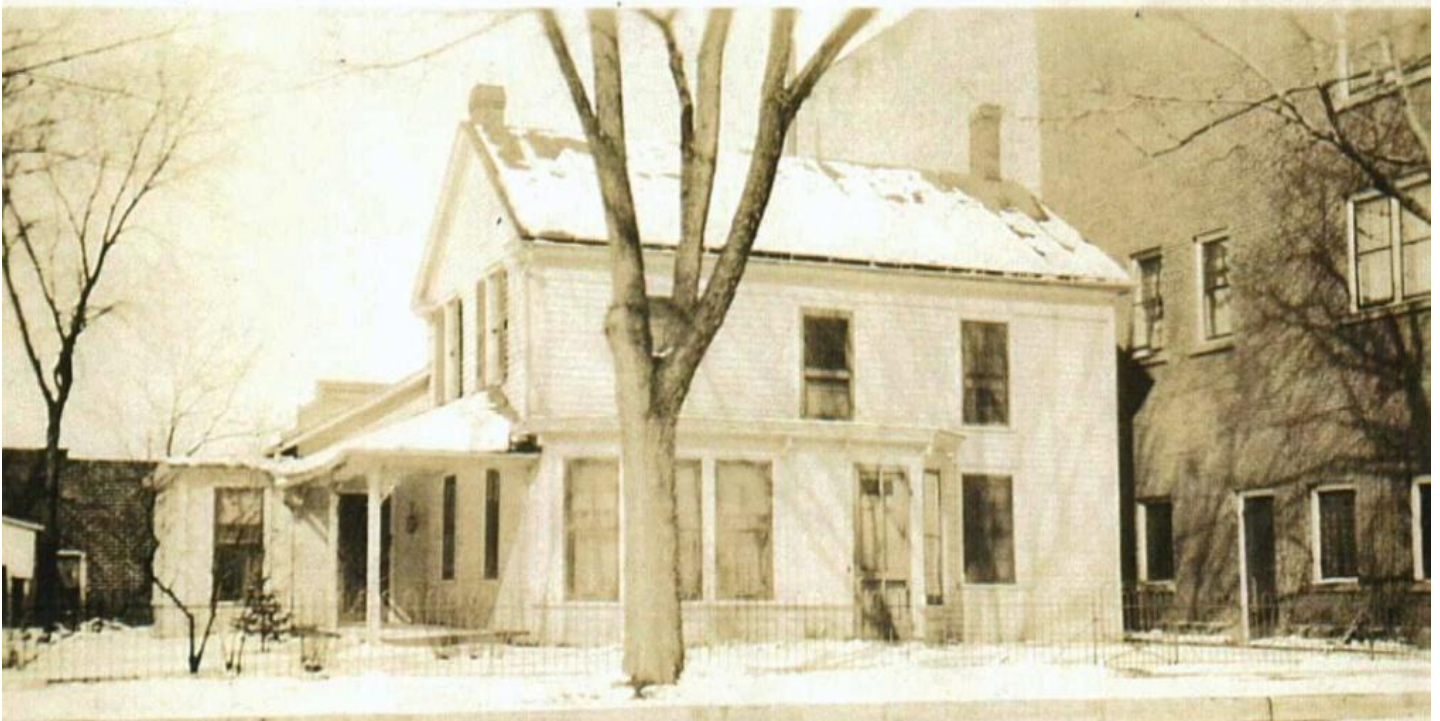


Richland County History Room photo.

The Toms Furniture Company Funeral Parlor is important as an example of transitional vernacular Commercial style architecture. One of the larger and more elaborate examples of the early twentieth century commercial buildings built in Richland Center, the Toms Funeral Home exhibits the vertical pier and horizontal spandrel system constructed with a minimum of ornament that is characteristic of this style. Also characterized by a pediment and capped pilaster generally associate with historic styles, the Toms Building demonstrates the transition between historic styles and early modern architecture in Richland Center.

Although fairly well-preserved, The Toms Funeral Parlor's original architectural character has been altered by the repair of the top of the façade with red brick and the replacement of the lower windows and the door. Other examples of the early modern influence in Richland Center are the Edwards Building at 101 South Church Street and the Coffland Annex at 100 South Main Street.

Toms' original 1860s cabinet shop still remains within the complex of this structure, and like most craftsmen of that era, he also retailed his own goods. He thus added the retail portion of the building as his shop and business expanded. The building illustrates the evolution of the craft to a retail enterprise in the late nineteenth century. The building is one of the few remaining craft-associated enterprises in a city that supported many craftsmen in the early years of the twentieth century.



The Toms' family home was located on the northwest corner of the intersection of Church and Seminary Streets. The location is now a parking lot. Richland County History Room photo. Ads are from *The Richland Democrat* newspaper.



FOR THE BEDROOM

Designs of exquisite beauty in Bedroom Furniture of splendid quality and at unprecedented prices.

Antique Ivory Enameled Suite \$45.....	\$38
Kaiser Grey Suite \$35.....	\$28

We are showing some very fine pieces in Circasian Walnut and Quartered Oak. Take advantage of this opportunity to get a fine bedroom suite at a greatly reduced price.


THE H. TOMS CO.

HOME FURNISHERS FUNERAL DIRECTORS

CONFIDENCE

Every woman would insist on a "WHITE" ROTARY if they had the same confidence in this machine that we have —We know it's good points and don't know of any bad ones.

Each machine is specially fitted with full set of attachments and is guaranteed.



If it's a "White" it's "Right"

Have confidence in us—we know. Get your new sewing machine now. Get a "WHITE" ROTARY now.

You will never know real pleasure and comfort until you do. You needn't wait.

THE H. TOMS CO.

HOME FURNISHERS FUNERAL DIRECTORS