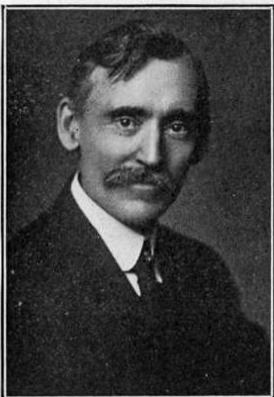




Charles Craig House, 314 North Central Avenue, 1895.

Of frame construction, this elaborate two story house exhibits the irregularity of form, massing, design and surface essential to the Queen Anne style through multiple roof shapes, decorative shingles and stained glass, decorative open porches and tower, as well as ornamental wood turnings.



George Franklin Barber

The Charles Craig house is a George Franklin Barber design. George Franklin Barber was one of the more prolific architects of the Victorian period in the United States. Barber is generally credited as one of the primary architects establishing the architectural formula known as “The American Queen Anne Style.” The bulk of Barber’s business followed the “catalog architecture” model. Thousands of houses built from plans sent through the mail from Barber’s Knoxville, Tenn. office have been identified, with many of them being on the National Register of Historic Places. There was an identical twin to the Craig House in Knoxville, Tenn. which met its demise in preparation for the Knoxville World’s Fair. Several authorities

have written that George Franklin Barber was the first to sell prefabricated houses shipped in crates via rail, but there is no evidence he actually engaged in manufacturing. It is unclear

whether entire houses were sold by anyone prior to 1900. Described as a “model of architectural beauty” when it was built in 1895 for the manager of the Krouskop Department Store, Charles Craig, this well preserved home is the most elaborate wood interpretation of the Queen Anne style in Richland Center.



Original furnishings of the Craig House – Richland County History Room photos.



(Keep in mind the homes listed are private residences which are not open to the public. Please respect the occupants' privacy when viewing their homes from the sidewalk).