

Just the ticket for exploring!

Come and Explore!



View of WIS 60 at Pleasant Mound Road

Wisconsin's Scenic Byways are just the ticket for exploring several of our state's scenic and natural resources. You will experience many natural wonders including winding rivers, majestic lakes and bays, rugged shorelines, breath-taking bluff-top views, rolling hills and idyllic orchards, and farmlands and forests that are a blaze of color in the fall.

This brochure highlights Wisconsin's three formally designated scenic byways, which range in length from 60 to 250 miles. It includes the location, approximate mileage and estimated driving times of each route.

The byways offer a unique selection of things to do and see: numerous parks and trails for hiking and biking, boat launches, historic sites, visitor and learning centers, wildlife and birding viewing areas, local dining and shops and much more.

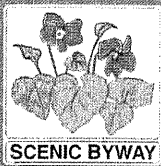
Additional information about Wisconsin's Scenic Byways is included on websites listed inside this brochure.

Enjoy your journeys!



View of WIS 35 from Gordon's Bay near Lynxville

Something for everyone in all seasons!



Wisconsin Scenic Byway Lower Wisconsin River Road



Lower Wisconsin
River Road

Location

Begins at the intersection of I-90 and WIS 60 near Lodi and ends at the junction of WIS 35 (the Great River Road National Scenic Byway) in Prairie du Chien.

Length

100 miles

Roadway

WIS 60 is primarily a two-lane highway that follows the Wisconsin River.

Some Highlights

Eagle watching, canoeing, angling, access to Tower Hill State Park and Talliesin, numerous festivals including Susie the Duck Days, Morel Mushroom Festival, Civil War re-enactments.

Additional Information

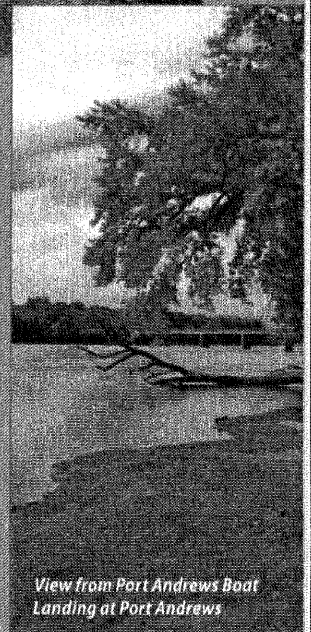
www.lowerwisconsinriverroad.org
Lower Wisconsin State Riverway Board
(800) 221-3792
mark.cupp@wisconsin.gov



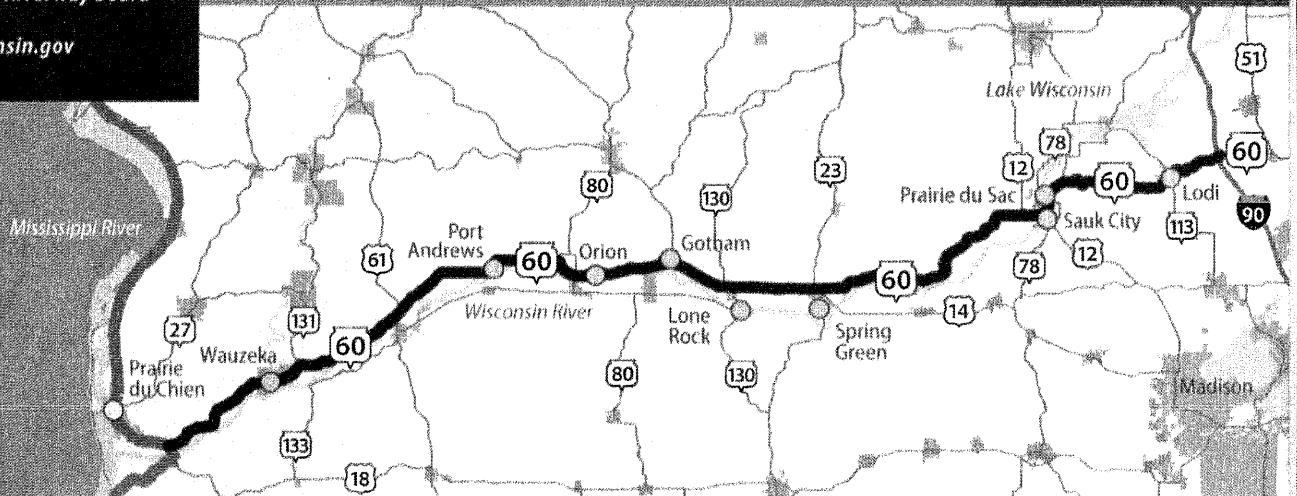
WIS 60 at US 61

The essence of rural Wisconsin, the beauty of the Driftless Region and the splendor of the lower Wisconsin River Valley is revealed along this byway. Thousands of acres of public lands present opportunities for canoeing, camping, angling, hunting, archeological pursuits and wildlife watching.

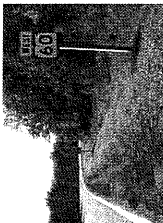
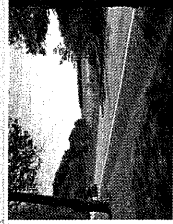
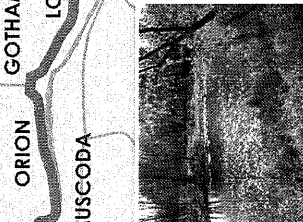
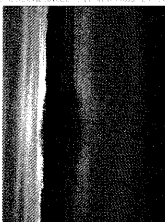
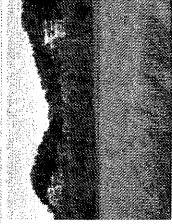
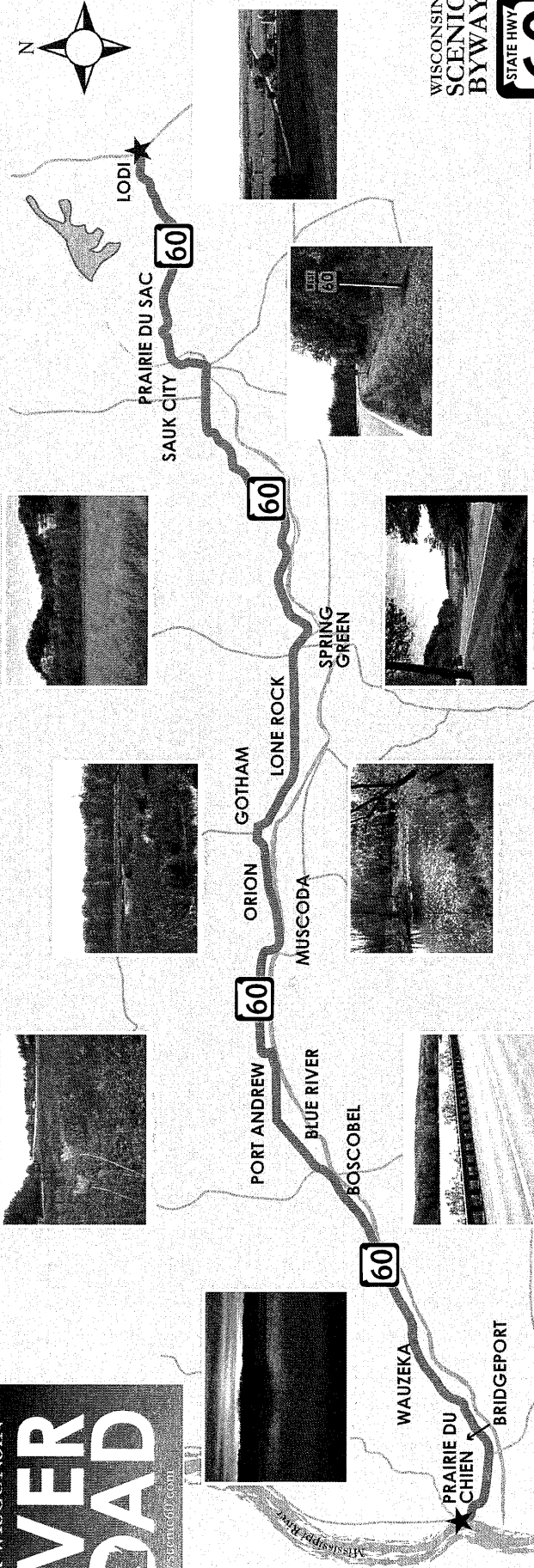
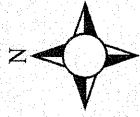
Historic river towns with contemporary flavor offer various lodging options. Rich in history, the byway holds many stories of days gone by. During the Black Hawk War of 1832, several battles were fought in the valley. Historical markers along the way recount the failed escape route taken by Chief Black Hawk and his followers.



View from Port Andrews Boat Landing at Port Andrews



LOWER WISCONSIN
RIVER ROAD
www.wisconsin.gov



WISCONSIN
**SCENIC
 BYWAY**



Lead Chamber of Commerce: www.wisconsin.com, 608-932-4412 | Sauk Prairie Area Chamber of Commerce: www.saukprairie.com, 608-447-6238 | Muscoda Chamber of Commerce: www.muscoda.com, 608-447-6238 | Spring Green Area Chamber of Commerce: www.springgreen.com, 608-586-2042 | Re-Iland Chamber & Development Alliance: www.reilandchamber.com, 608-447-6238 | Wisconsin Chamber of Commerce: www.wisconsin.com, 608-234-2344
 Regional Chamber of Commerce: www.boscobelregion.com, 608-372-3672 | Prairie du Chien Area Chamber of Commerce: www.prairieduchien.org, 815-732-1673